

Polynomial Functions 8-1

Definition of a Polynomial Function

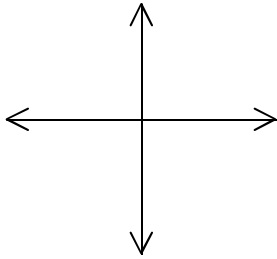
Examples:

1. Find $f(3) - f(-3)$ if $f(x) = 2x^2 - 4x + 6$

2. Find $p(m + 2)$ if $p(x) = 3x - 8x^2 + x^3$

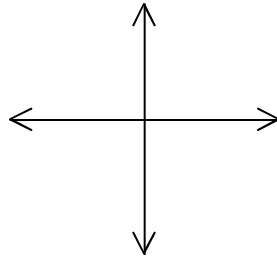
Types of Polynomial Functions

Constant



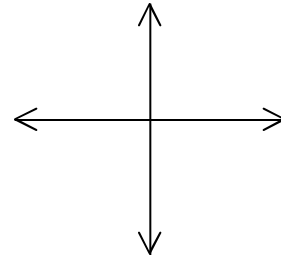
Degree

Linear



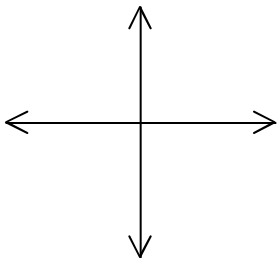
Degree

Quadratic



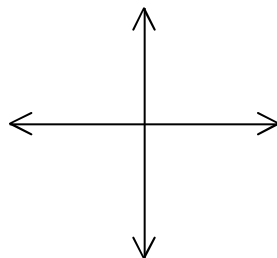
Degree

Cubic



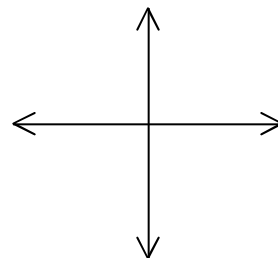
Degree

Quartic



Degree

Quintic



Degree

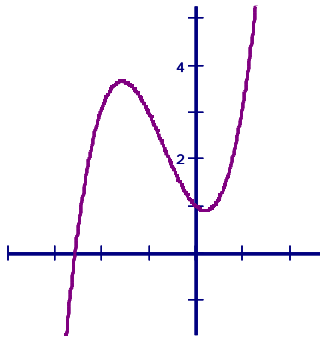
Polynomial Functions 8-1

Even Functions

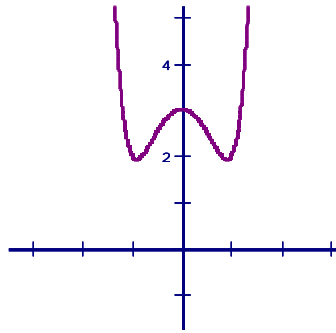
Odd Functions

Determine if the function is even or odd. State the number of real zeros it has.

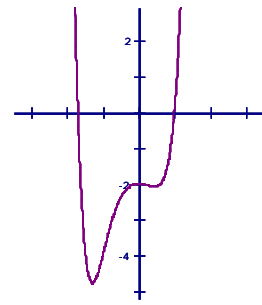
1. _____



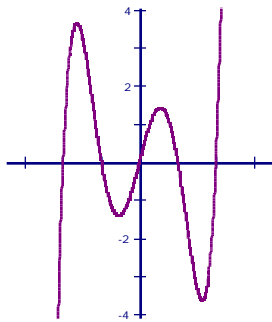
2. _____



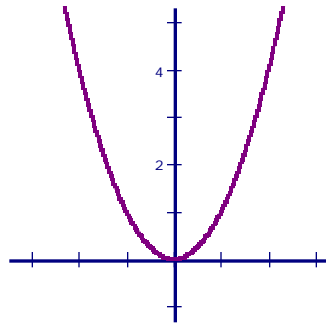
3. _____



4. _____



5. _____



6. _____

