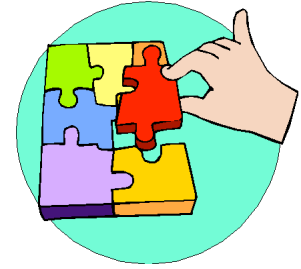


# Activity

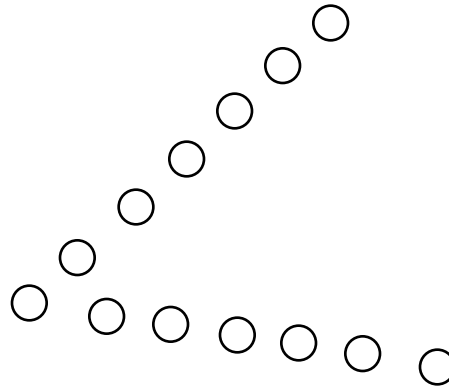


## Angle Activity

**Purpose:** This activity will have students form various types of angles.

**Materials:** Depending on the number of students in the classroom, only a very long piece of string or chord is needed.

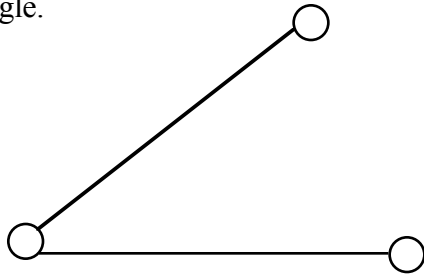
**Activity:** After defining what an angle is and its parts, take the students outside or push the classroom desks against the wall. If the class is large (15 students or more), have the students form an angle with 6 students forming one ray and 7 students forming another ray with the “extra student” in the second ray becoming the vertex of the angle.



Have the “left-over” students name the angle using their classmate’s name, such as ‘angle Scott-Jeffrey-Chad’. Ask the students who would be the vertex. Ask one of the students not forming the angle to become an “interior” point to the angle, ask another to be an exterior point. Next, have the students who are forming the angle to identify what type of angle they created (the above angle is an acute angle). Keeping one of the rays stationary, have the other ray comprised of the students move to form an obtuse angle; next form a right angle, then a straight angle.

Mix the students up and do again.

Note: If the class is small, you may want to pick three students to hold the long string to form the angle.



The rest of the activity can continue as before.