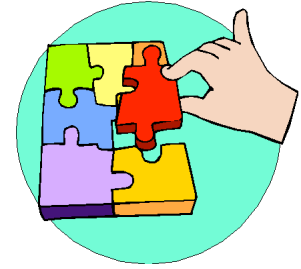


# Activity



## TRIANGLE SUM

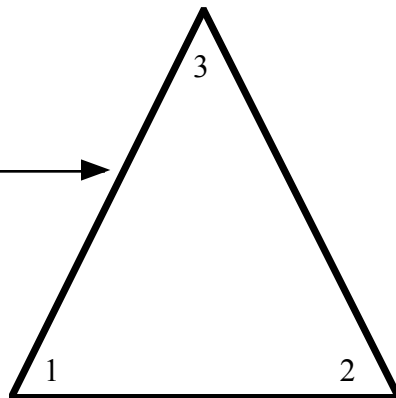
**Purpose:** To prove that the three angles of a triangle total  $180^\circ$ .

**Materials:** Scissors, worksheets

**Activity:** Using the additional pages that accompany this, give each pair of students one sheet of triangles, one worksheet, and a pair of scissors. Have one student cut each triangle out. Give the triangle to the partner who “tears” the angles of the triangle off. After doing this, have the students place each vertex of the three angles on the point on the given line of the worksheet (see below). Have the students complete the statement.

**Enhancement:** Give each student another copy of the triangles. Have the students measure each angle (to the nearest degree) in each triangle and add the angles. What do the three angles total? Why may the sum be off?

**Original triangle** →



**3 angles torn off triangle and placed on line**

